

Welcome and thank you again for your trust in Cottbus-Apartments.

With this letter I would like to give you some helpful information for your arrival and your stay in the apartment.

Here is a brief overview of the topics:

- Arrival by car and public transport
- Parking
- Description of check-in
- Supply / Shopping

Getting there

The exact address of the building is:

Karl-Marx-Str. 60, 03044 Cottbus or Virchowstr. 38, 03044 Cottbus
(corner building with entrances to two different streets)



If you want to travel from the train station by public transport, you can take tram line no. 4 in the direction of "Neu Schmallwitz" directly from the station forecourt.

The stop to get off is called "Zimmerstraße". The journey time is about 10 minutes. From there it is about a 6-minute walk to your apartment.

Fahrplan

Übersicht

A

Cottbus, Hauptbahnhof

B

Cottbus, Zimmerstr.

Ab heute, 15:00

jetzt

i

Es gilt Maskenpflicht!

Bitte tragen Sie eine FFP2-Maske in den Fahrzeugen.

[Weitere Informationen](#)

Do. 29.09.2022

15:07

BUS

44

15:17

10 Minuten, 0x Umst., 1,90 €

15:09

Tram

4

15:18

9 Minuten, 0x Umst., 1,90 €

15:24

Tram

4

15:33

9 Minuten, 0x Umst., 1,90 €

15:28

BUS

16

15:44

16 Minuten, 0x Umst., 1,90 €

15:37

BUS

15

15:47

10 Minuten, 0x Umst., 1,90 €

Brandenburgische Technische Universität Cottbus-Senftenberg

Oberstufenzentrum

Da Nando

Orchid-Thai-Massage

Handy Cottbus

Bellesa

Alsafa Restaurant

Sebastian's

Eric Grui

Pus

Klo

Mr. parer Cottbus

NORDSTRASSE

HUBERTSTRASSE

ANNENSTRASSE

KARL-MARK-STRASSE

PETERSILIENSTRASSE

PUSCHKINPROMENADE

FRIEDRICH-LEBERT-STRASSE

Virchowstraße 38

Zimmerstraße

6 Min.

Ziel: Virchowstraße 38

Von Zimmerstraße

Parking

If you are arriving by car, there are numerous free parking spaces in the adjacent residential area, which is only a few meters away from the apartment complex. (Area in the white rectangle) The best chances are in this street:

Erich-Weinert-Strasse

Just be careful not to park your car in a time-restricted area if you want to park longer.



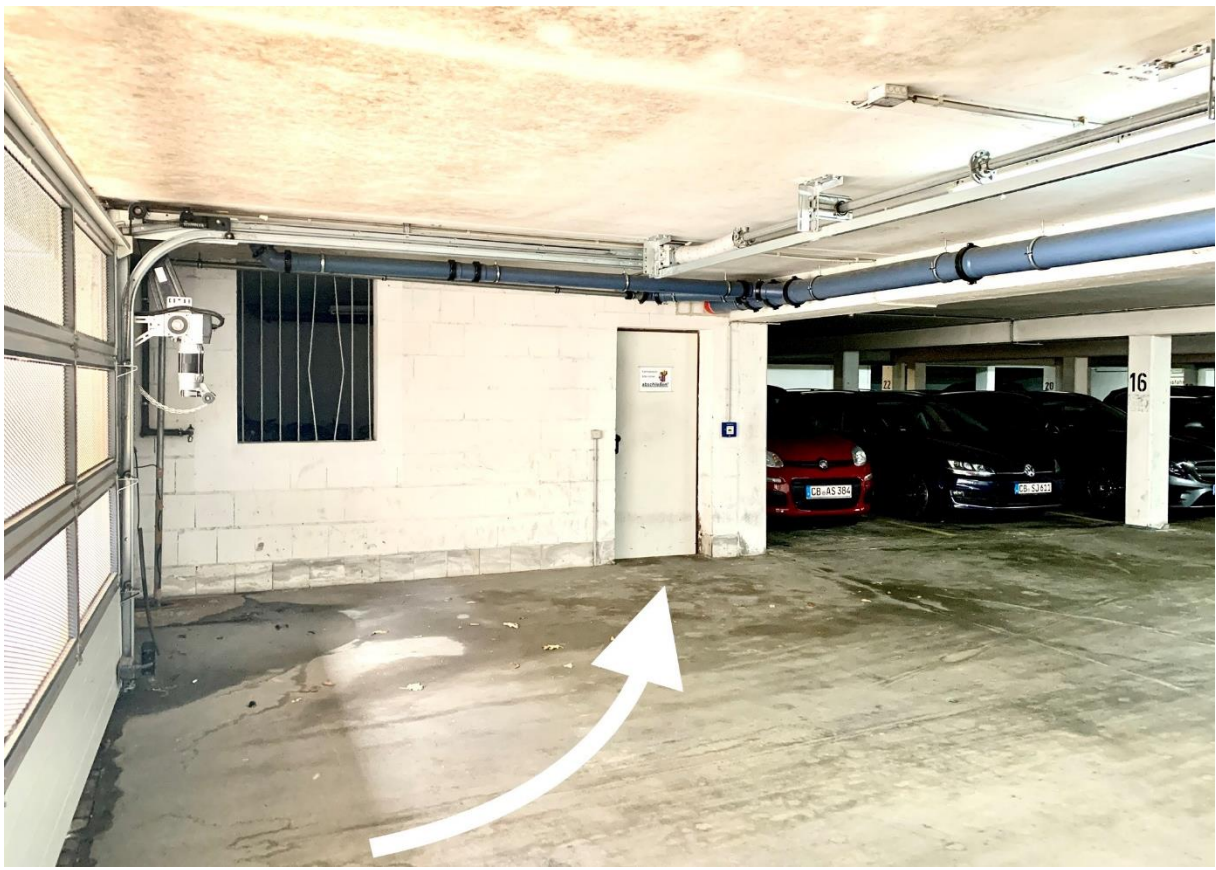
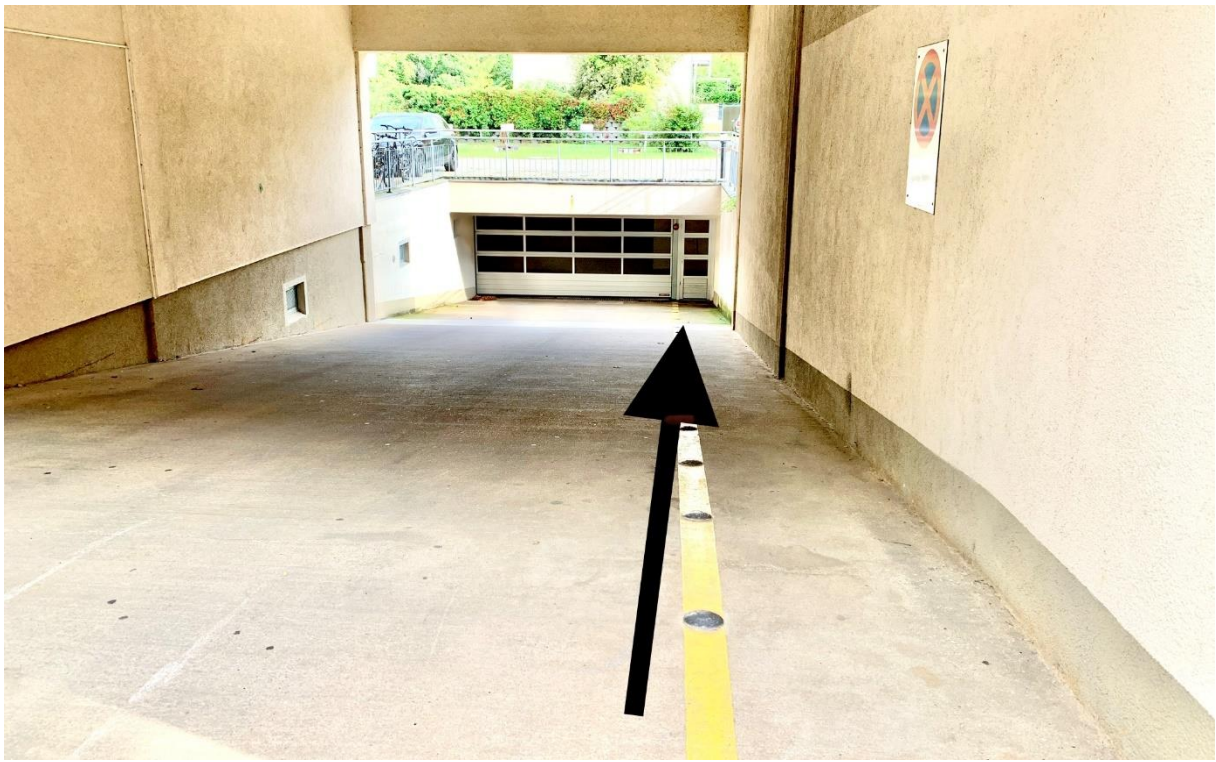
Unfortunately, it is not possible to park directly in the backyard, as there are only private parking spaces for the neighboring companies.

However, you are welcome to park your car on the right-hand side of the entrance to the underground car park for loading and unloading on your arrival and departure so that the distances are not too far.



If you have booked a parking space in the underground car park, please also park your car here and first pick up the key to the apartment. You can find out how to get the key under “Check-in” below.

The lockable bicycle storage room is located in the underground car park on the left behind the roller door. You can find the key for the door in the apartment next to the blackboard in the hallway.



Check-in

Check-in is relaxed and flexible using a key box on site. So you have no time pressure or stress when you arrive.

And this is how you find your apartment:



This is the entrance to the staircase for your apartment. The key box to self check-in is in the backyard next to the underground car park.

When you are in front of the entrance, please turn right around the corner (Virchowstraße) and walk along the building.



Walk along the wall of the house and until the entrance to the underground car park.

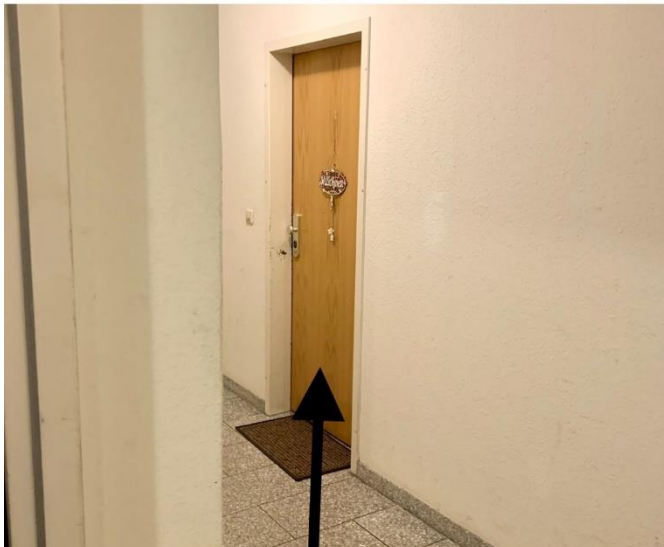


Go past the entrance to the underground car park and turn left into the backyard. You recognize the entrance at the barrier.

Behind the barrier on the right brick wall is a mailbox in the ivy.

You received the current codes for the mailbox lock and the key box separately with this document. Your key is in key box #3.

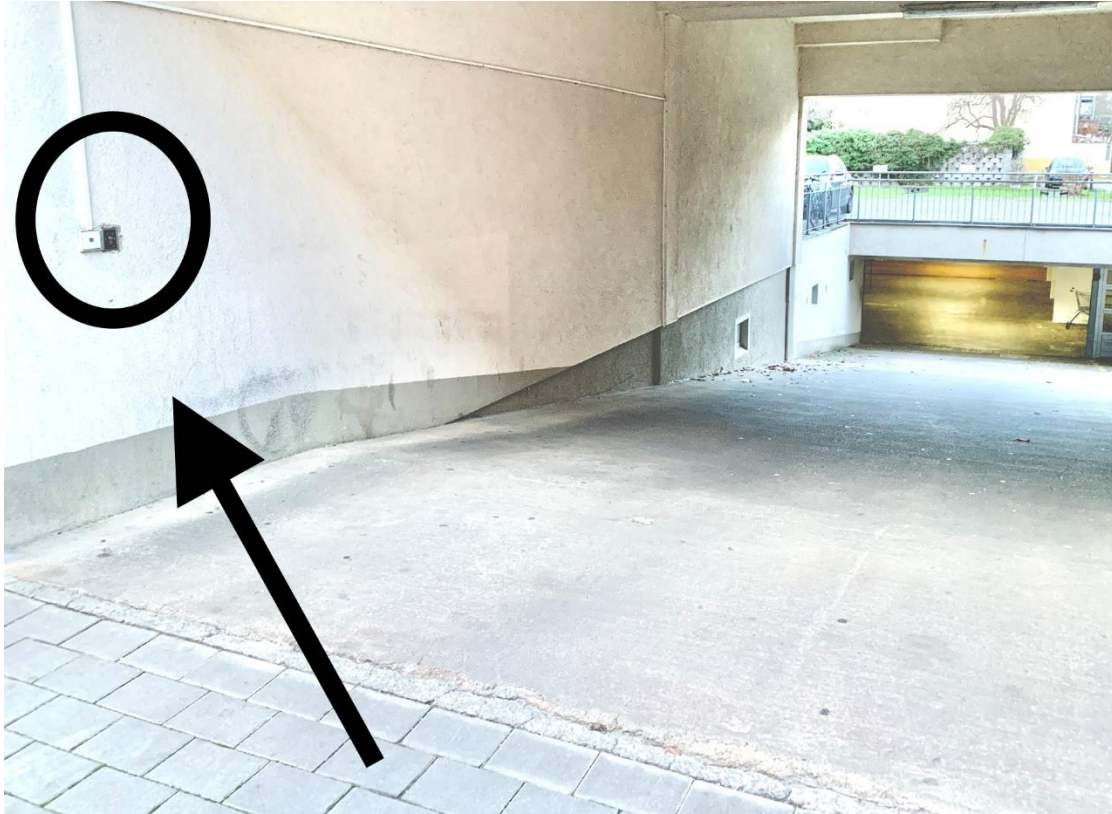
You slide down the black top to reveal the dial. Then enter the current numerical code and slide the black switch down. You can now remove the key and close the key box and mailbox again. Please turn all combination locks before you leave.



You go back to the entrance and make your way to the 4th floor. (Last floor before the attic)

You turn left into the hallway. The apartment is behind the first door on the right. You can find them by the door sign that says "Willkommen."

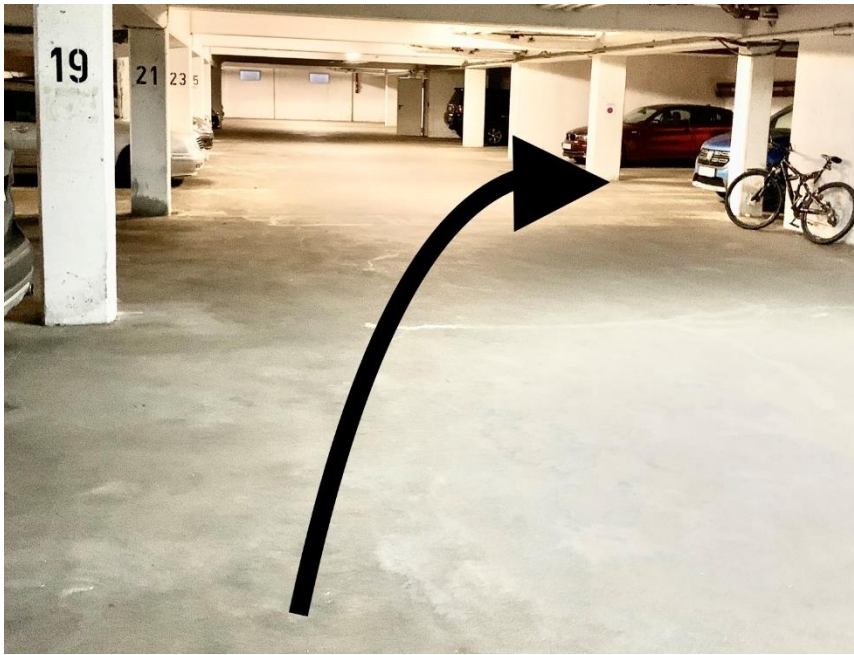
If you have booked a parking space in the underground car park, proceed as follows:



On the left wall of the entrance to the underground car park you will find a lock. With the key you just found to the apartment, you can open the roller door.



Drive your car into the underground car park up to the white stone wall and turn left around the bend.

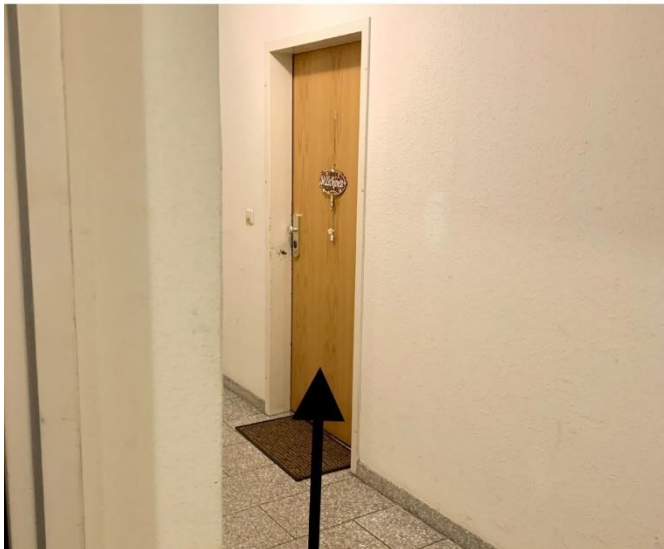


Your parking space is behind the curve on the right-hand side with the number 44



The staircase to your apartment is to the left of your parking space. From there please go to your apartment on the 4th floor as described above.

Here is the description of the image.



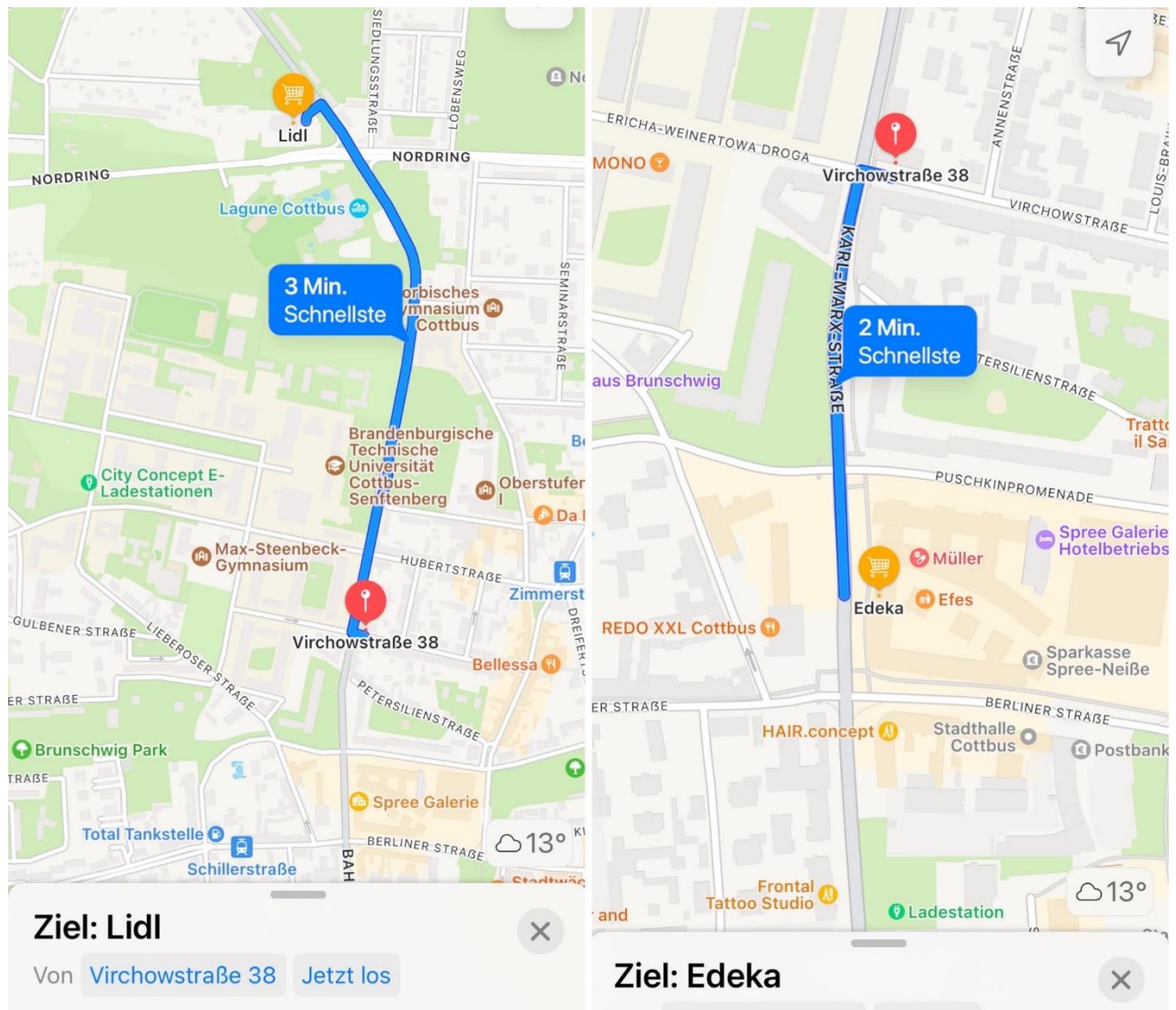
Have fun in the apartment and let me know if there's anything else I can do for you!

Supply / Shopping

The apartment is centrally located in Cottbus. Restaurants, bars and cafes can be reached on foot in less than 15 minutes. You can find many tips and recommendations on our website:

www.cottbus-apartments.de

For any time of the day there is a small late night shop called "Cotti" on the corner of the street 50 m away with everyday necessities. If you want something more, the usual discounters such as Lidl, Rewe or Edeka are also relatively close to the apartment.



Of course you can also have food delivered to you. We are happy to provide you with our company discount on Lieferando.

<https://cottbus-apartments.de/service/lieferservice/>

Your doorbell for the delivery service is marked with the name "Apricot".
Enjoy your meal!